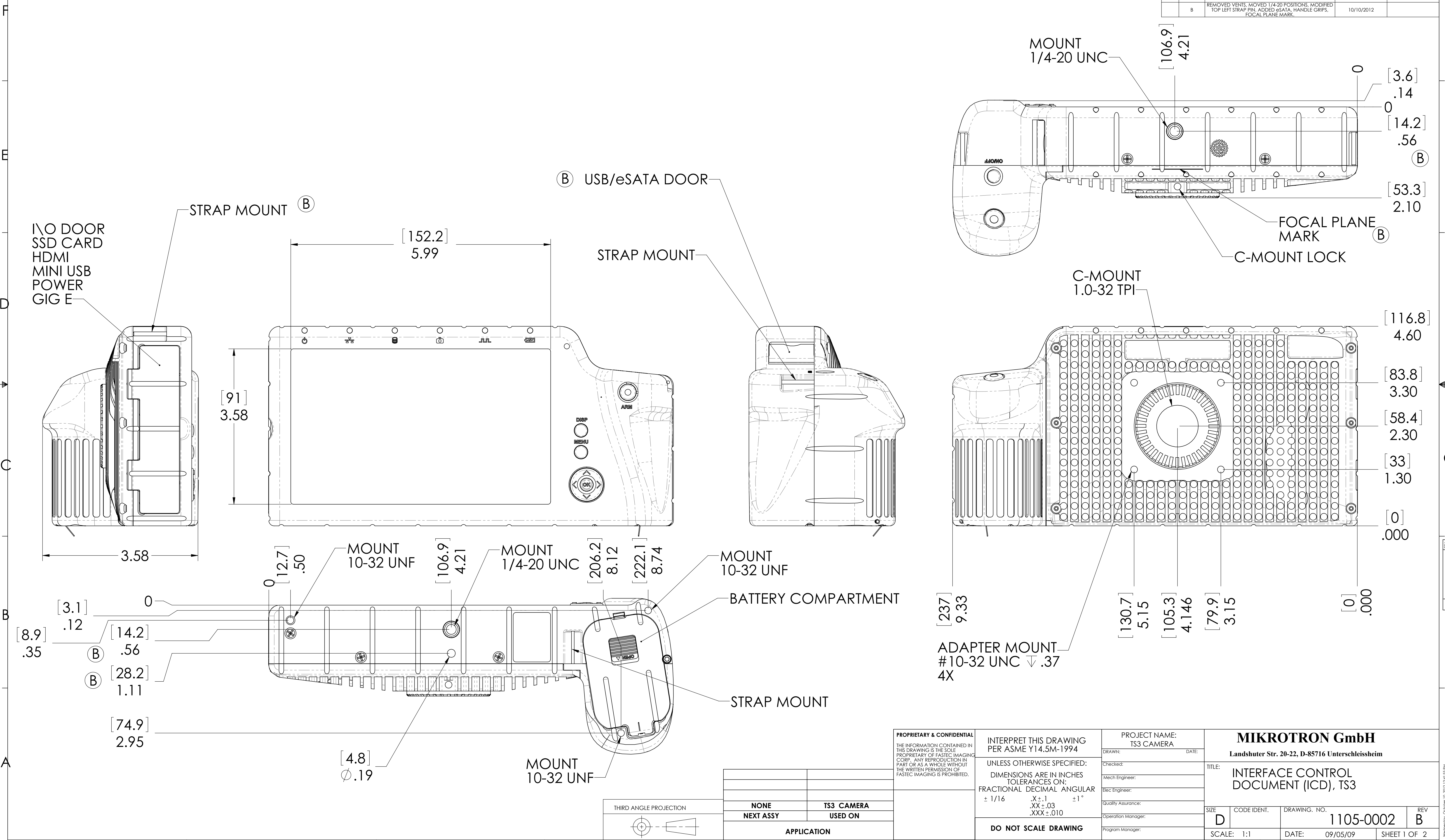


NOTES: UNLESS OTHERWISE SPECIFIED

1. FOR ADDITIONAL TS3 CAMERA SPECIFICATIONS, GO TO WWW.MIKROTRON.DE.

REVISIONS				
ZONE	REV.	DESCRIPTION	DATE	APPROVED
	01	INITIAL RELEASE	09/05/09	EMH
	02	UPDATED FOR PRODUCTION RELEASE	03/17/11	EMH
	A	PRODUCTION RELEASE	08/31/11	EMH
	B	REMOVED VENTS, MOVED 1/4-20 POSITIONS, MODIFIED TOP LEFT STRAP PIN, ADDED eSATA, HANDLE GRIPS, FOCAL PLANE MARK.	10/10/2012	

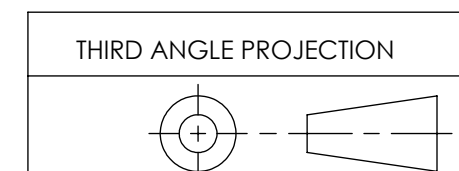


PROPRIETARY & CONFIDENTIAL  
 THE INFORMATION CONTAINED IN THIS DRAWING IS THE SOLE PROPRIETARY OF FASTEC IMAGING CORP. ANY REPRODUCTION IN PART OR AS A WHOLE WITHOUT THE WRITTEN PERMISSION OF FASTEC IMAGING IS PROHIBITED.

INTERPRET THIS DRAWING PER ASME Y14.5M-1994  
 UNLESS OTHERWISE SPECIFIED: DIMENSIONS ARE IN INCHES TOLERANCES ON: FRACTIONAL DECIMAL ANGULAR  
 ± 1/16 .X ± .1 ± 1°  
 .XX ± .03  
 .XXX ± .010

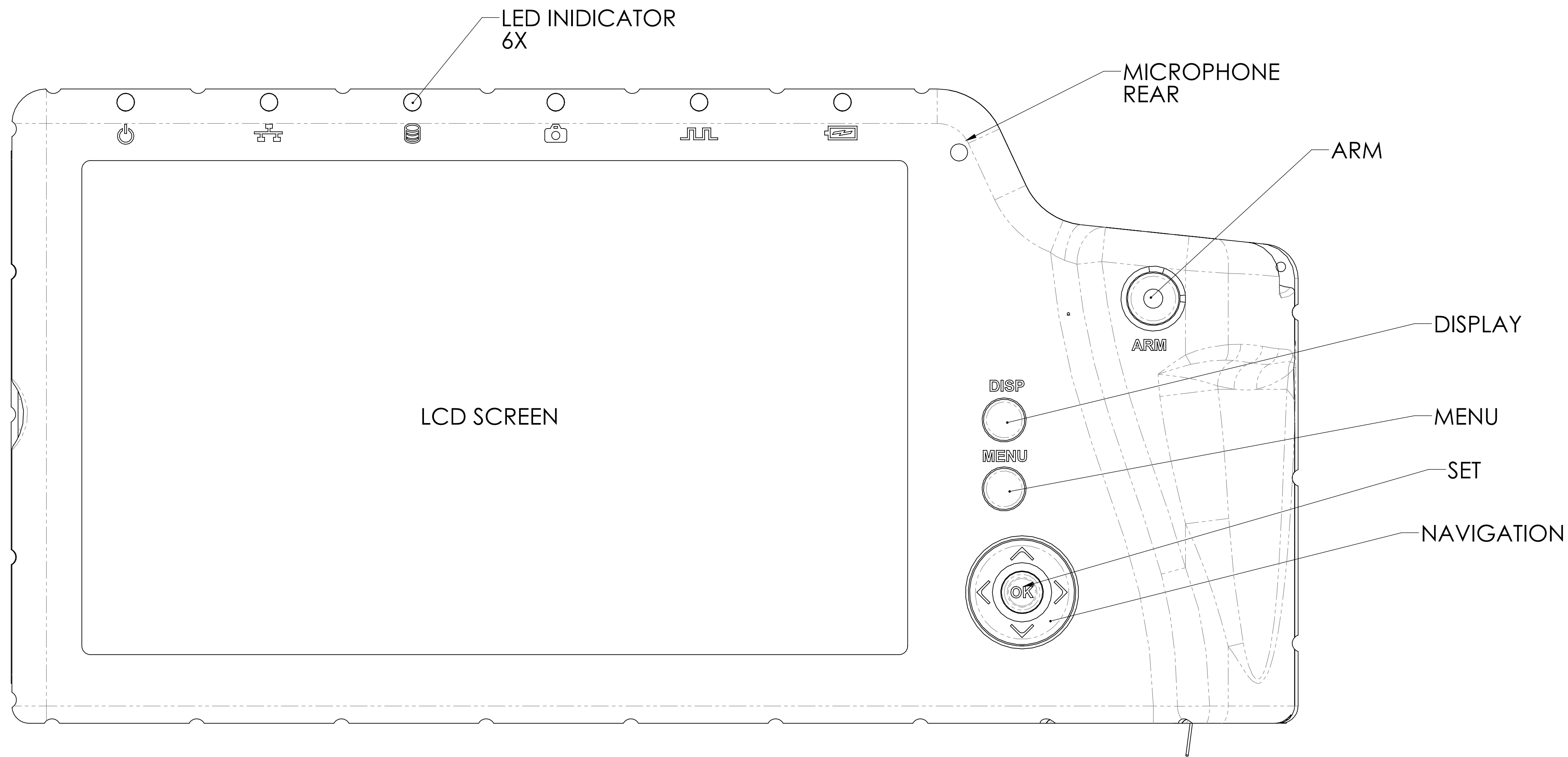
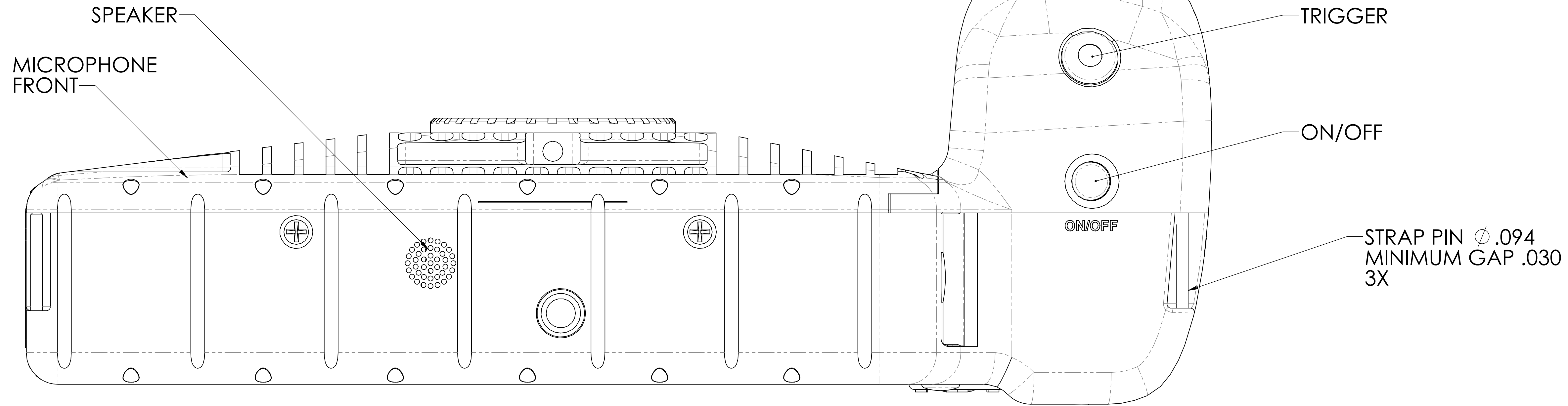
PROJECT NAME: TS3 CAMERA  
 DRAWN: DATE:  
 Checked:  
 Mech Engineer:  
 Elec Engineer:  
 Quality Assurance:  
 Operation Manager:  
 Program Manager:


**MIKROTRON GmbH**  
 Landshuter Str. 20-22, D-85716 Unterschleissheim  
 TITLE: INTERFACE CONTROL DOCUMENT (ICD), TS3  
 SIZE: D CODE IDENT.: DRAWING. NO. 1105-0002 REV B  
 SCALE: 1:1 DATE: 09/05/09 SHEET 1 OF 2



APPLICATION	
NONE	TS3 CAMERA
NEXT ASSY	USED ON

DO NOT SCALE DRAWING



 <b>FASTEC IMAGING CORP</b> 17150 VIA DEL CAMPO, STE 101, CA 92127 PH 858.592.2342			
SIZE	CODE IDENT.	DRAWING. NO.	REV
D		1105-0002	B
SCALE: 2:1	DATE: 09/04/09	SHEET 2 OF 2	

1105-0002 LB  
 B  
 A